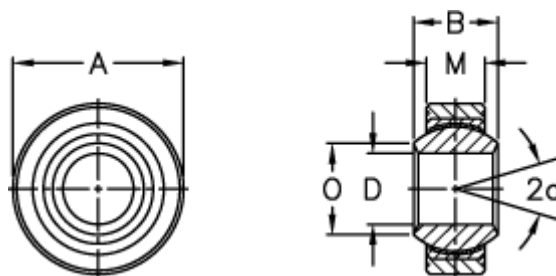


Article number: 03404040

Description: Fluro Rod end GLRSW 40

## Measures



A	= 87	Static load C0 (kN) = 495
a (degrees)	= 16	Weight = 1400
B	= 49	
D	= 40	
Dynamic load C (kN)	= 286	
M	= 35	
O	= 44.2	
Permissible rpm	= 100	